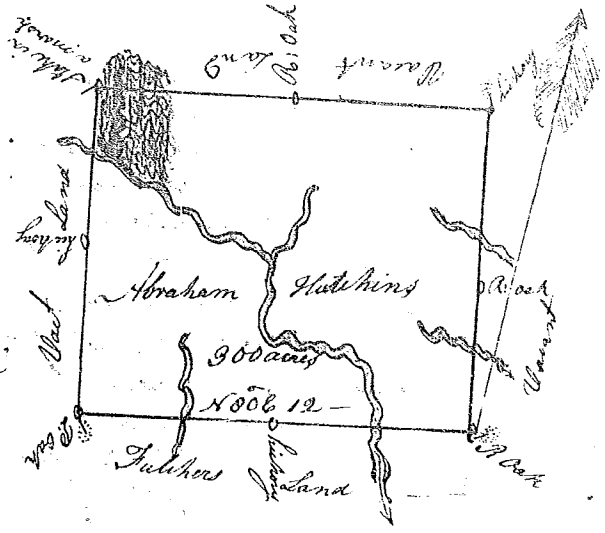


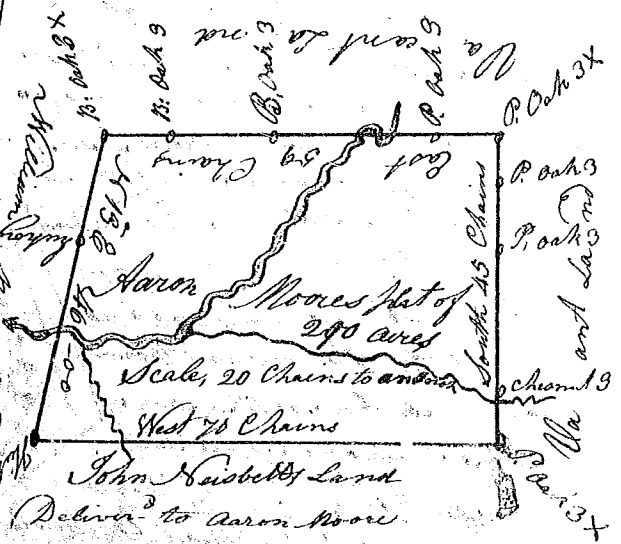
State of South Carolina 9th District (128)

Pursuant to a warrant to me Directed by
 by John Thomas Esq^r Commissioner of Locations
 for the District of the north side of Saluda river
 I have Surveyed and laid out unto Abraham
 Hutchins a Tract of Land Containing 300 Acres
 Situate lying and being above the Ancient
 Boundary line on Rocky creek a branch of Broad
 River. Bounded N.W. by Francis Tulehurs Land
 on Every other side Vacant and has such shape
 and marks as the Annexed plat Represents
 Surveyed by me the 12th July 1784
 Recorded the 9th Sept^r 1784



State of South Carolina 9th District

On the East side of the Ancient Boundary
 Line, Pursuant to a warrant from John
 Thomas Esq^r Commissioner of Locations bearing
 date 29th July 1784, I have Admeasured
 and laid out unto Aaron Moore a Tract of
 Land Containing Two Hundred & Ninety
 Acres, Lying on both sides of a creek
 called Bens creek. Bounded to the N. by
 John Nusbetts Land to the E. by W^m Morrisons
 All other sides Vacant Land and hath such
 other shape and marks as the Annexed plat
 Represents. Surveyed the 6th of Sept^r 1784
 Recorded the 9th Sept^r 1784



State of South Carolina Ninety 5th District

On the East side of Ancient Boundary line
 Pursuant to a warrant from Thomas Esq^r Commissioner
 of Locations for the N. side of Saluda River dated 7th July
 1784 I have Admeasured and laid out unto John
 Whittemore a Tract of Land Containing Two Hundred
 Acres Lying on the South fork of South Sygar Ri
 = ver Bounded to the N. by the River to the E. by
 Francis Powers & on Old line to the W. by John
 Nusbetts Land and David Andersons Land
 And hath such other shape and marks
 as the Annexed plat Represents
 Surveyed the 7th Day of Sept^r 1784
 Recorded the 9th Sept^r 1784

